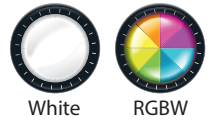
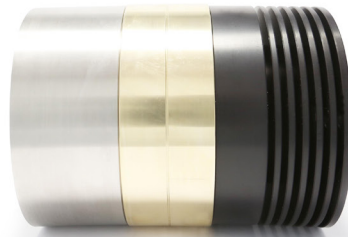


QT75


Weld-in


The QT75 LED underwater light features single color or color change technology utilizing the entire color spectrum, which produces over 16 million color choices to create just the right mood. The smallest weld-in design on the market (up to 50° angling). Never feel trapped by this weld-in fixture. The exchangeable projector allows servicing and upgrades without the hassle of hauling your boat. With its 90° degree beam angle the QT75 LED is recommended for Steel and Aluminum hull boats 90+ feet LOA.

With complete Lloyd's Register Approval, GL and ABS Design Appraisal on all components, the QT75 has been installed on some of the largest and most prestigious Superyachts in the World. The QT75 is a completely customizable underwater lighting solution for larger yachts. We offer a bespoke design service tailored for each individual hull.



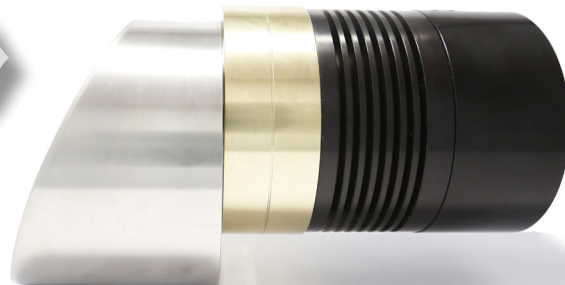
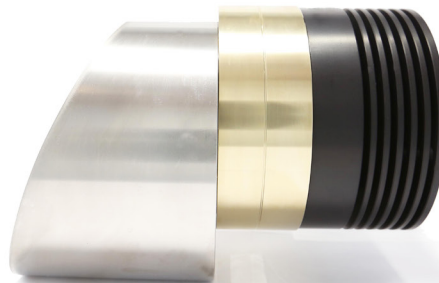
Hull Material
Aluminium / Steel 

Boat Size
90+ ft/ 20+ m 


Lumens
Up to 25,000 

Kelvin
6,500 


Beam Angle
90° 




 **Maintenance**
Inside the hull

 **Control Options**
On / Off Switch

 **Driver**
External

 **Growth Resistance Lens**
Borosilicate Glass

 **Power**
110 - 240vAC

 **Installations**
Weld In

IPX8
Underwater
RATED



QT75

Weld-in

Mounting

| | |
|---------------------|--|
| Hull Material | Aluminium Steel |
| Boat Size | 90+ Feet (27+m) |
| Spacing | 3' - 9' (1 - 3m) Transom 5' - 15' (1.5 - 5m) Port and Starboard |
| Beam Angle | 90° |
| Installation Angles | Flush+ 50 degree |

Technical

Per Fixture

| | |
|------------------------------|--|
| Lumens - max on single color | 20,000 |
| Kelvin - white light only | 6,500 |
| Typical LED Life Expectancy | 40,000 hrs |
| Min-Max Operating Voltage | 110-240 VAC |
| Current / Amp draw | 1.4 - 0.7A |
| Driver Type | External |
| Driver Output | White = 55 vDC@ 2.8A Color Change = 4 channels @ 1A |
| Control Options | White = On / Off Switch Color Change = DMX |
| Bonding | Welded |

Physical - Light Unit

Per Fixture

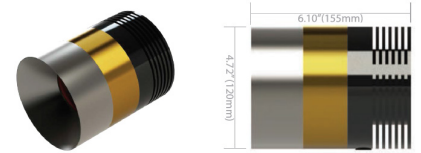
| | |
|----------------------------------|--|
| Length of Fixture - Single Color | 6 3/32- 8 1/4" (155-210mm) |
| Diameter of Fixture - RGB+W | 4 3/4 - 5 1/2" (120-140mm) |
| Length of Fixture - Single Color | 8 1/4 - 10 1/4" (210-260mm) |
| Diameter of Fixture - RGB+W | 4 3/4 - 5 1/2" (120-140mm) |
| Removal Space Required | 4" (100mm) |
| Total Weight | S/S = 21 - 28 lbs Aluminium = 18 - 20 lbs |
| Cable Length | 13' (4M) Maximum 19.5' (6M) |
| Material - LED unit | Hard Anodized 5083 Aluminium |
| Material - Weld In section | 5083 Aluminium 316L Stainless Steel |
| Growth Resistant Lens | Borosilicate Glass |

Physical - Driver

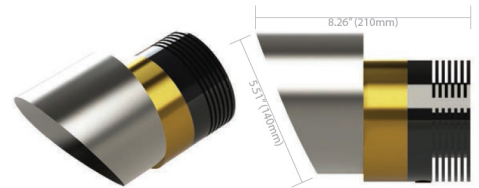
Per Fixture

| | |
|---|--|
| Single Color Driver Dimensions (L x W x H) | 8 11/16" x 4 3/4" x 3 1/2" (220 x 120 x 90mm) |
| Color Change Driver Dimensions (L x W x H) | 10 1/4" x 6 5/16" x 3 1/2" (260 x 160 x 90mm) |

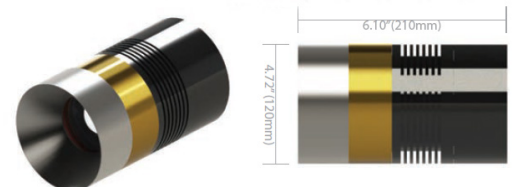
Single Color with Flush + Weld In Section



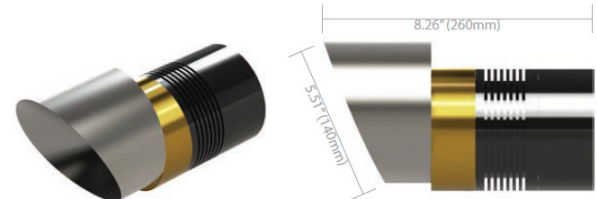
Single Color with 50 deg Weld In Section



Color Change with Flush + Weld In Section



Color Change with 50 deg Weld In Section



QT75

Weld-in

Driver Specifications - QT75 - HP3 White

| | |
|----------------------------|---|
| Length of box | 8 11/16" (220mm) |
| Length overall w/ plugs | 12 19/32" (320mm) |
| Width of box | 4 3/4" (120mm) |
| Height of box | 3 1/2" (90mm) |
| IP rating | 67 with blanking plugs / seals |
| Mounting | 4 x screws through base, accessible under lid |
| Input voltage | 100-240vAC |
| Internal Fuse | 5 Amp |
| Box Material | Power Coated Aluminium |
| Max cable diameter - Power | M20 / 10mm |



Driver Specifications - QTS 75 - RGBW Color Change

| | |
|----------------------------|---|
| Length of box | 10 1/4" (260mm) |
| Length overall w/ plugs | 13" (330mm) |
| Width of box | 6 5/16" (160mm) |
| Height of box | 3 1/2" (90mm) |
| IP rating | 67 |
| Mounting | 4 x screws through base, accessible under lid |
| Input voltage | 100-240vAC |
| Internal Fuse | 5 Amp |
| Box Material | Powder Coated Aluminium |
| Max cable diameter - Power | M20 gland / 10mm |
| - DMX | M16 / 7mm |



Underwater Lights Limited

UK Design and Production
The Great Dunton Forge, London Road,
Dunton Green, Sevenoaks, Kent, TN13 2TD UK.
T: +44 (0) 1732 455753 • F: +44 (0) 1732 743233

USA Sales Office
T:+1 954 604 4024

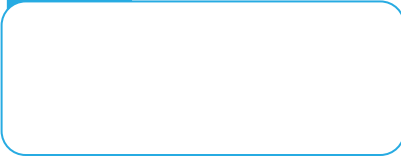
E: uw@underwaterlights.com

www.underwaterlights.com

© 2020 Underwater Lights Limited All Rights Reserved.

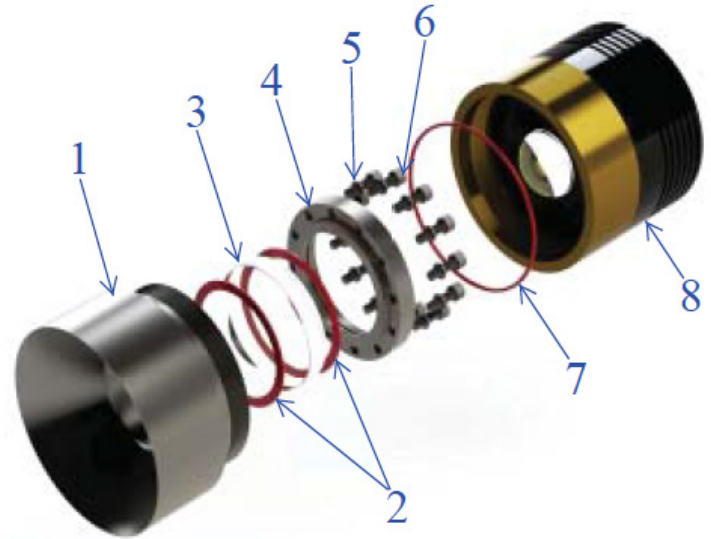
Underwater lights limited reserves the right to change specifications without notice.

Your Local Dealer



Identification of Parts

| | |
|---|--------------------------|
| 1 | Weld in Insert / section |
| 2 | NAF Gaskets |
| 3 | Lens |
| 4 | Lens retaining ring |
| 5 | Spring Washers |
| 6 | Bolts |
| 7 | Silicone Gasket |
| 8 | LED light unit |

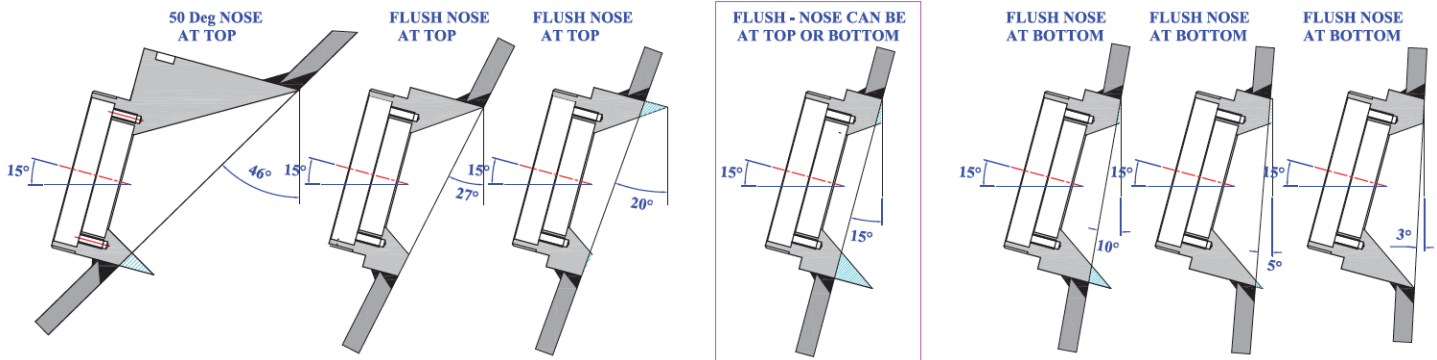
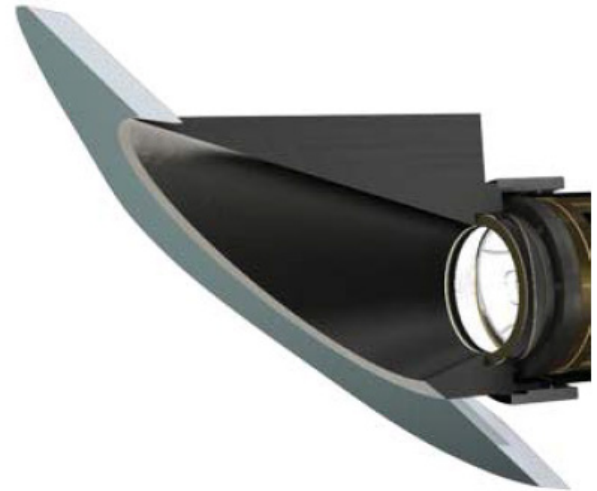


The inserts must be 250mm below the water line to the top of the fixture with the vessel loaded with 50% fuel and water.

Advised entry angle is 15 degrees. However around the beginning of the stern a 15 degree angle may not be possible. Use the 50 degree insert to get the best possible entry angle. N.B. This could be 25 degrees. The next insert may be 20 degrees and the next 15 degrees this achieves a graceful sweeping rise in entry angle and not a sharp jump of 25 to 15 degrees.

We can propose a free light location plan with the type of inserts provided we have transverse sections and a GA in Acad form.

Please contact us at uwl@underwaterlights.com





The center line of beam/insert is angled down 15 degrees to the horizontal.
Blue shaded areas are to be removed.

QT75

Weld-in

Stainless Steel
50 deg
Flush +



- Color**
- White 
 - RGBW 

- Part Number**
- QT75-00300+HP3W-316L
 - QT75-00300+RGBW-316L

- Color**
- White 
 - RGBW 

- Part Number**
- QT75-00350+HP3W-316L
 - QT75-00350+RGBW-316L

Aluminium
50 deg
Flush +

- Color**
- White 
 - RGBW 

- Part Number**
- QT75-00600+HP3W-5083ALU
 - QT75-00600+RGBW-5083ALU

- Color**
- White 
 - RGBW 

- Part Number**
- QT75-00650+HP3W-5083ALU
 - QT75-00650+RGBW-5083ALU

Flush + Weld In Section

50 deg Weld In Section



Underwater Lights Limited

UK Design and Production
The Great Dunton Forge, London Road,
Dunton Green, Sevenoaks, Kent, TN13 2TD UK.
T: +44 (0) 1732 455753 • F: +44 (0) 1732 743233

USA Sales
T: +1 954 604 4024

E: uwl@underwaterlights.com

www.underwaterlights.com

© 2020 Underwater Lights Limited
All Rights Reserved.
Underwater lights limited reserves the right
to change specifications without notice.

Your Local Dealer